

Quality Door and Window Fittings

Door Accessories

ROYAL THEFT CLAW

D44 1108

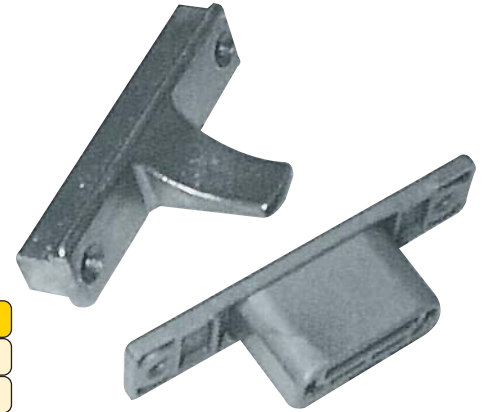
GROUPCO - D44 1108

Royal Theft Claw

Manufactured in zinc die cast silver finish with plastic receiver.

Designed to protect the hinges from forced entry and assist in sealing the sash/frame when fitted in conjunction with two hinges.

The claw fits into standard eurogrooves.



Part No.	Description	Box Qty.
810A20	Sash Part	20
840A30	Frame Plate	20



Quality Door and Window Fittings

Door Accessories

ROYAL THEFT CLAW

D44 1108

Royal Theft Claw

